

ORCHID GROUP

PRIME TOWER -A





About Us

ORCHID GROUP is a renowned builder with a legacy of delivering high-quality, luxurious flats that redefine urban living. Our mission is to create homes that inspire and nurture the well-being of our residents.

Our latest project,
**ORCHID PRIME
TOWER A**, offers
spacious and
elegantly designed
flats in NOIDA. With a
focus on comfort,
convenience, and
sustainability, our
flats are perfect for
those seeking a
luxurious lifestyle.



2&3 BHK APARTMENTS





Why Choose Us?

Quality Construction: Built with the finest materials and craftsmanship-

Customer-Centric Approach: Personalized service and support throughout the buying process-

Transparent Transactions: Clear and concise documentation for a hassle-free experience



Key Features-

Spacious Interiors: Well-designed flats with ample natural light and ventilation-

Modern Amenities: State-of-the-art gym, swimming pool, clubhouse, and more-

Secure Living: 24/7 security, CCTV surveillance, and gated community-

Convenient Location: Close proximity to major landmarks, public transport, and amenities-

Sustainable Living: Energy-efficient appliances, rainwater harvesting, and more



OUR MOTTO :

- ❖ **Quality**
- ❖ **Improvisation of as per changing time**
- ❖ **Timely Possession**
- ❖ **Customer satisfaction**
- ❖ **Forever relations**



PROJECT HIGHLIGHTS :

- ❖ **SEMI FURNISHED FLATS WITH SEMI MODULAR KITCHEN, WARDROBE,**
- ❖ **LIGHTS, FANS, FALSE SELLING.**
- ❖ **LIFT, CAR PARKING .CCTV CAMERA, SECURITY.**

STRUCTURE :

- ❖ Framed structure
- ❖ RCC Columns and Beam
- ❖ LIVING / DINNING ROOM
- ❖ Bed Room: Digital tiles
- ❖ Stair: Granite
- ❖ Ceiling: POP with Cornice
- ❖ Electrical: Branded Wires & Switches

KITCHEN FLOORS :

- ❖ Digital tiles floor & walls
- ❖ CP Fitting: Branded
- ❖ Counter, Granite Top with SS sink water supply: provision of hot and cold water

TOILETS :

- ❖ Flooring: Non-skid ceramic tiles
- ❖ Walls: Designer tiles up to 7 ft.
- ❖ CP Fitting: Branded
- ❖ Chinaware: Branded

BALCONY :

- ❖ Floor: Non-skid ceramic tiles
- ❖ Wall: Marbles chip permanent fix
- ❖ Door/Window:
- ❖ Main Door: Wooden
- ❖ Internal Door: Aluminum
- ❖ Window: Aluminum

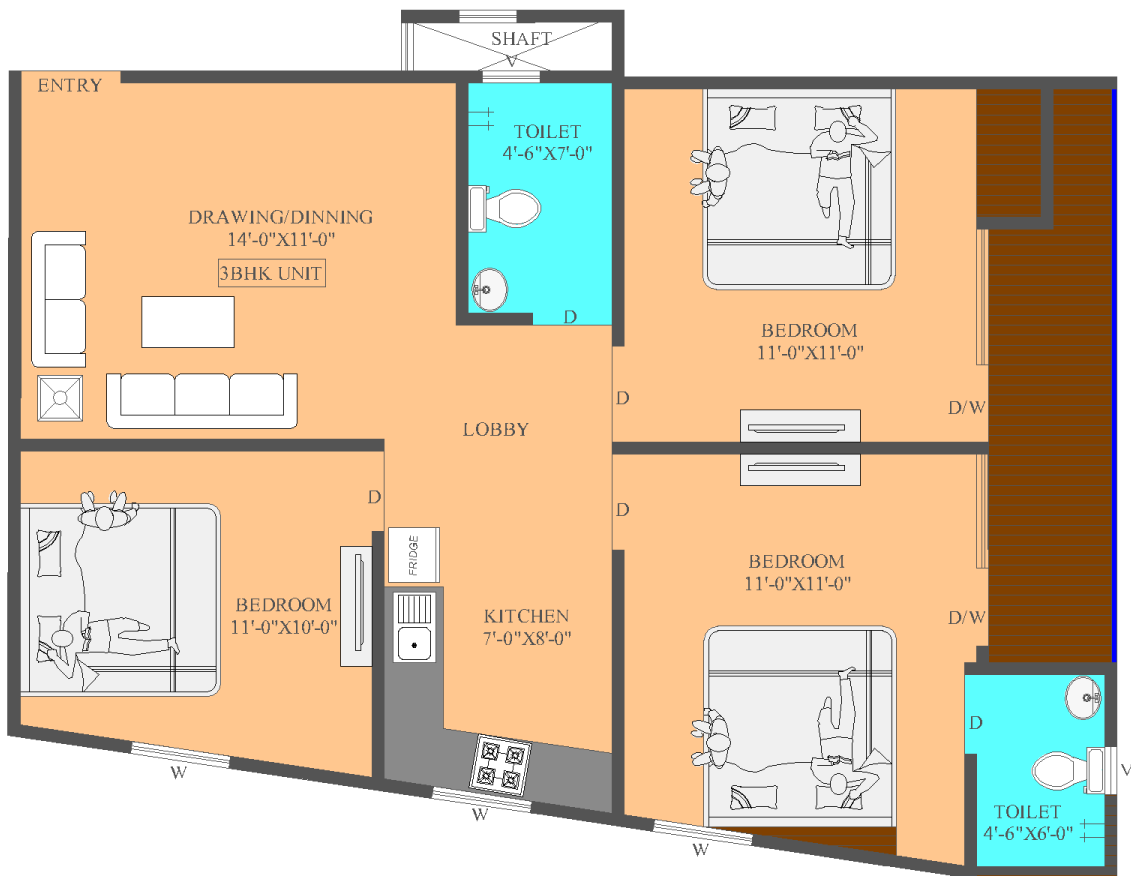
The floor plan illustrates a 10-story apartment building with four types of SBHK units. The layout is organized around a central corridor and stairs. The units are as follows:

- SBHK UNIT TYPE-1:** 14'-0"X11'-0" (Drawing/Dining), 7'-0"X7'-0" (Kitchen), 11'-0"X10'-0" (Bedroom), 4'-6"X6'-0" (Toilet).
- SBHK UNIT TYPE-2:** 14'-0"X13'-8" (Drawing/Dining), 7'-0"X7'-0" (Kitchen), 10'-0"X10'-6" (Bedroom), 4'-6"X6'-0" (Toilet).
- SBHK UNIT TYPE-3:** 16'-0"X12'-6" (Drawing/Dining), 9'-0"X7'-6" (Kitchen), 11'-0"X10'-0" (Bedroom), 5'-6"X6'-0" (Toilet).
- SBHK UNIT TYPE-4:** 16'-0"X13'-6" (Drawing/Dining), 10'-0"X10'-6" (Bedroom), 11'-0"X10'-0" (Bedroom), 5'-6"X6'-0" (Toilet).

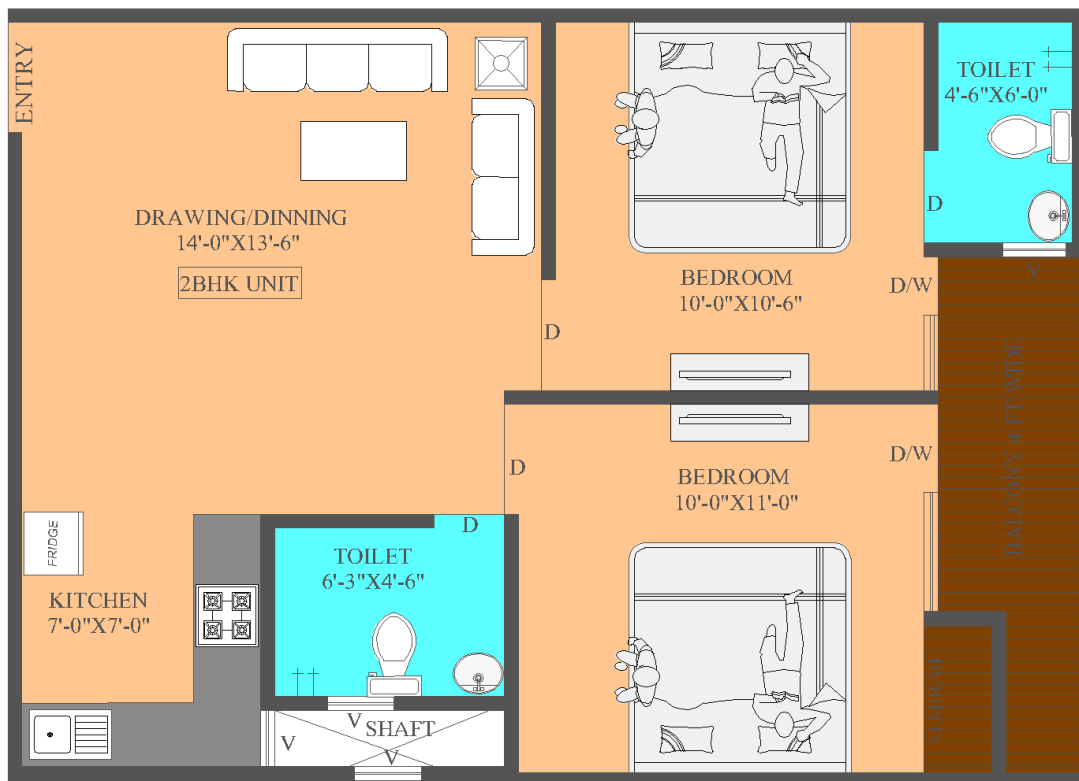
Additional features include a central corridor, stairs, and balconies. The plan also shows the location of various rooms and fixtures, such as bedrooms, drawing/dining areas, kitchens, and toilets. Dimensions are provided for each room and unit.

TOWER A

UNITS

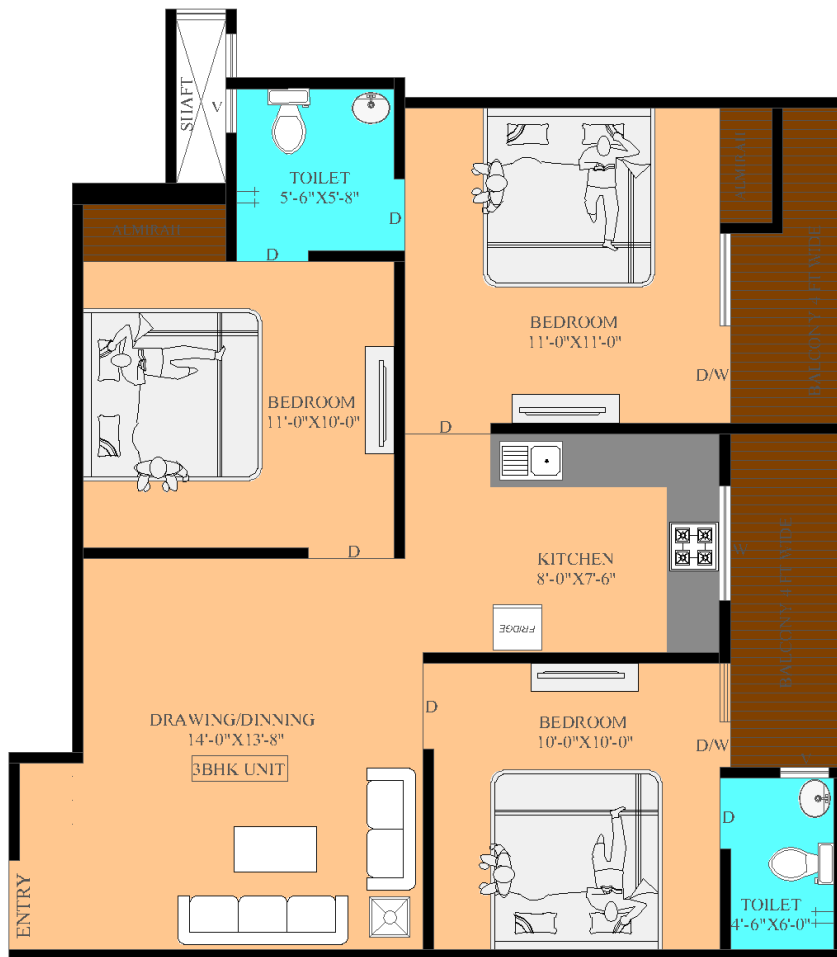


TYPE 1

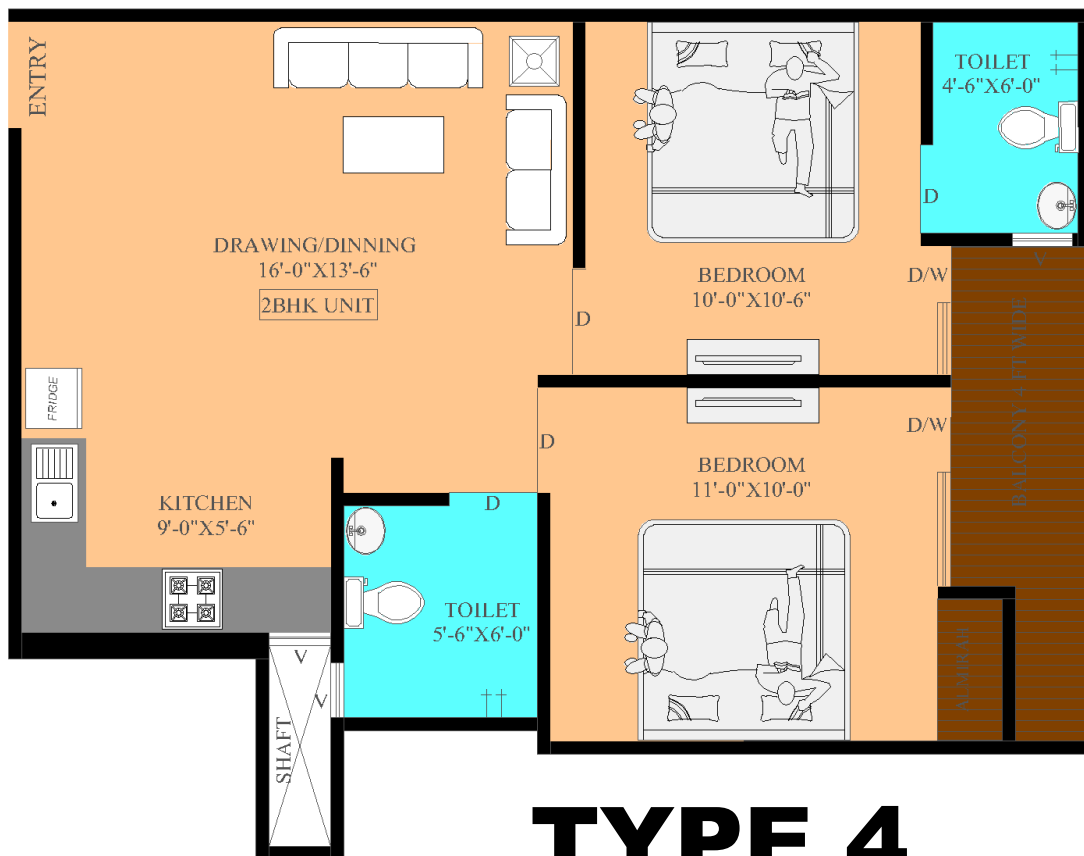


TYPE 2

UNITS



TYPE 3



TYPE 4

2BHK UNIT

DRAWING/DINNING
16'-0" X 12'-6"

KITCHEN
7'-6" X 8'-0"

BEDROOM
11'-0" X 10'-0"

BEDROOM
10'-0" X 10'-6"

TOILET
7'-0" X 5'-6"

TOILET
4'-6" X 6'-0"

BALCONY 4 FT WIDE

SHAFT

ENTRY

FRIDGE

W

V

D

D/W

TYPE C

This floor plan for a Type C unit includes the following rooms and features:

- ENTRY:** Features a closet (CLO) and a door (D) leading to the living area.
- DRAWING/DINING:** 16'-6" X 10'-9". Includes a 3BHK UNIT, a refrigerator (FRIDGE), and a door (D) leading to the living area.
- BEDROOM:** 12'-0" X 10'-0". Includes a door (D) leading to the living area.
- BEDROOM:** 10'-0" X 10'-6". Includes a door (D) leading to the living area.
- BEDROOM:** 11'-0" X 10'-0". Includes a door (D) leading to the living area.
- TOILET:** 7'-0" X 5'-6". Includes a door (D) leading to the living area.
- TOILET:** 4'-6" X 6'-0". Includes a door (D) leading to the living area.
- SHAFT:** Located near the entry.
- BALCONY:** 4 FT WIDE.
- Other features:** W (Window), OPEN, V (Vent), and D (Door) are indicated throughout the plan.

TYPE 6



❖ COMFORT RESIDENCY
❖ MORDERN APARTMENT

**DEVELOPED BY:
ORCHID GROUP**

**SWASTIK ARCHITECTS
AR. RAJKUMAR SHARMA
+91 9953613372,+91 7982149130**